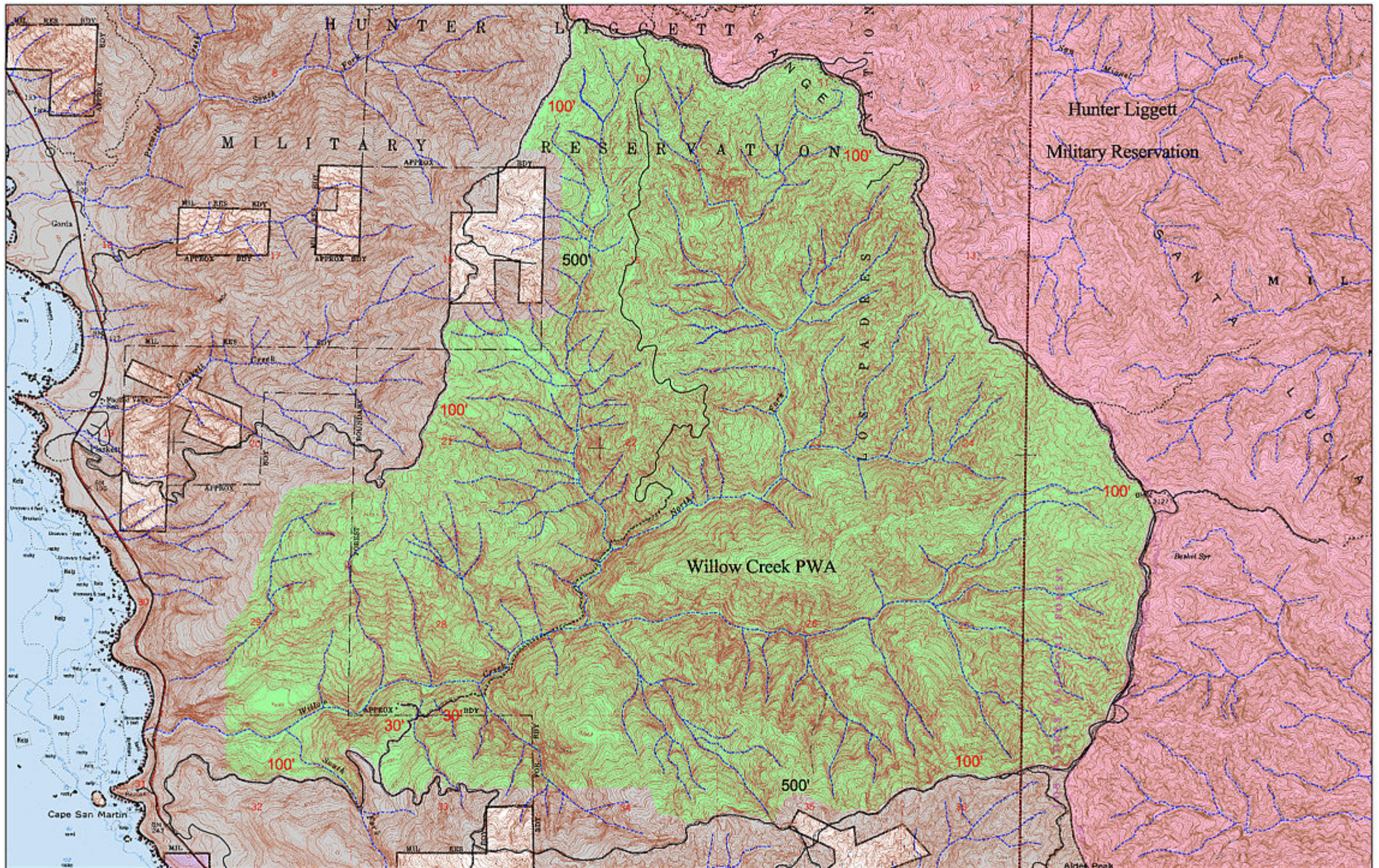


Willow Creek Proposed Wilderness Addition to the Silver Peak Wilderness

Los Padres National Forest Monterey County, California



Cartography:
Cory Galipeau, Conception Coast Project
3887 State St, Santa Barbara, CA 93105, 805 687-2073
ccp@conceptioncoast.org, www.conceptioncoast.org
March 22, 2002
Projection: Albers CA, NAD 27

Sources:
Potential Wilderness: 1:24,000 Conception Coast Project & California Wild Heritage Campaign
Existing Wilderness: 1:24,000 USFS Remote Sensing Lab, Sacramento, CA
Ownership: 1:24,000 USFS Remote Sensing Lab, Sacramento, CA
Ownership Outside USFS Boundaries: 1:100,000 California GAP Analysis Program Managed Areas
Streams: 1:24,000 USFS Remote Sensing Lab, Sacramento, CA
Roads: 1:24,000 USFS Remote Sensing Lab, Sacramento, CA
Contour Lines: 1:24,000 USGS Digital Raster Graphics

- | | |
|---|--|
| Proposed Wilderness | 300' Setback From Edge of Highway or Freeway |
| Existing Wilderness | 100' Setback From Edge of Road |
| US Forest Service | 30' Setback From Edge of Road |
| US Department of Defense | 300' Beyond High Water Mark of River |
| State or County Lands | 100' Beyond High Water Mark of Perennial Stream |
| Non-National Forest | 30' Beyond High Water Mark of Intermittent Stream |
| Roads | CL Center Line of River or Stream |
| Trails | 300' Setback From Edge of Developed Campground |
| Perennial Stream | 300' Setback From Edge of Major Utility Corridor |
| Intermittent Stream | 100' Setback From Edge of Minor Utility Corridor |
| USGS 24k Quadrangle Boundaries | |

The edge of a road is defined as the outermost portion of the roadbed including all associated cutbanks, pullouts, scenic overlooks and ditches.

The intent is to include the entire stream or river within wilderness with the exception of boundaries designated by CL. Stream and river setbacks are superseded by road setbacks.

USGS 24k Quadrangles, With Portions Shown:
Alder Peak
Cape San Martin

0 0.25 Miles
Scale 1:24,000

