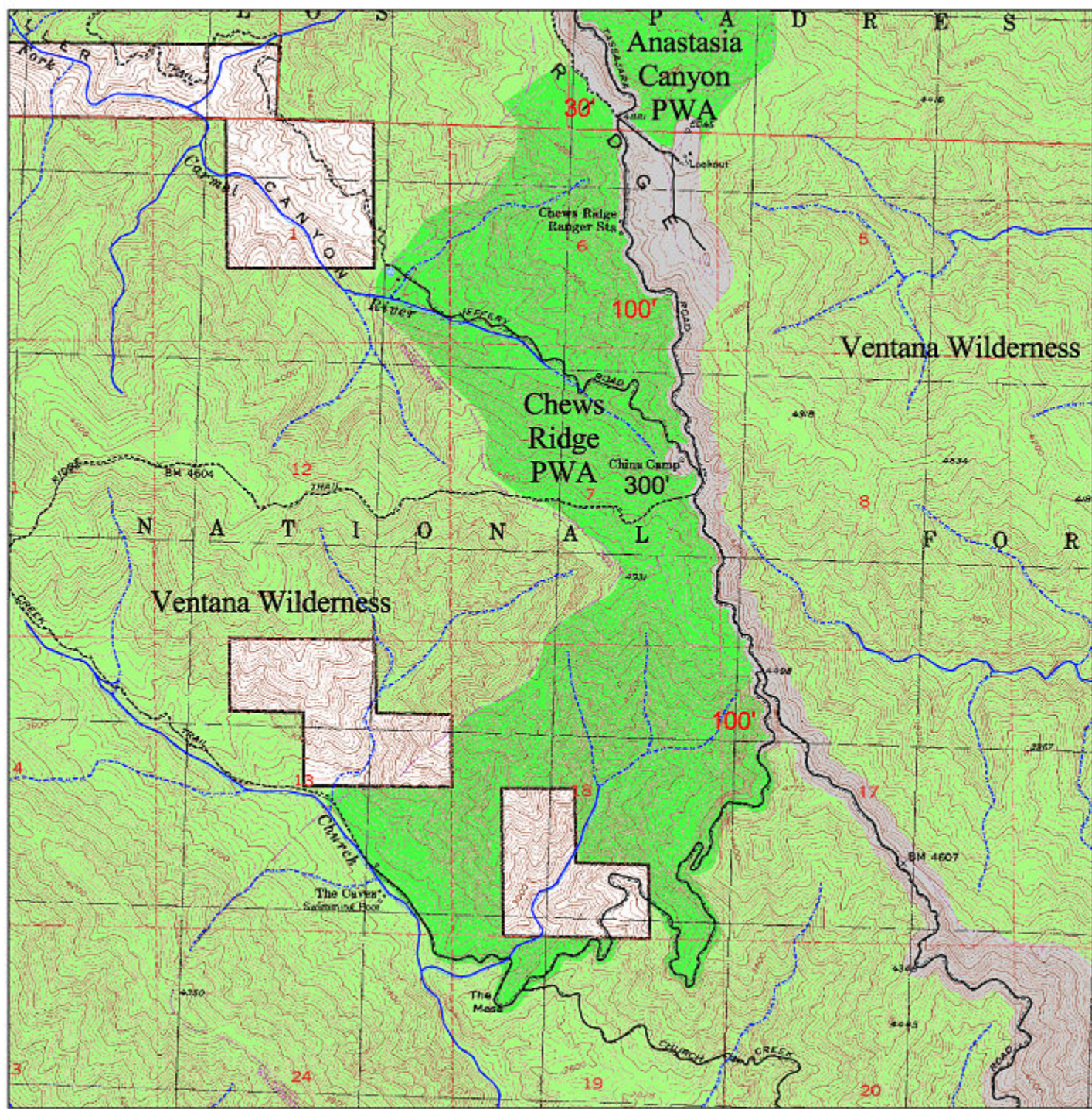


Chews Ridge Proposed Wilderness Addition to the Ventana Wilderness

Los Padres National Forest
Monterey County, California



Cartography:
Cory DeBevoise, Conception Coast Project
3807 State St, Santa Barbara, CA 93106, 805-897-2073
cody@conceptioncoast.org, www.conceptioncoast.org
March 31, 2002
Projection: Albers CA, NAD 27

Source:
Placer Wilderness: 1:24,000 Conception Coast Project & California Wild Heritage Campaign
Existing Wilderness: 1:24,000 USFS Service Boundary Map, Sacramento, CA
County: 1:24,000 USFS Resource Planning Lab, Sacramento, CA
Ownership Database USFS Resource Planning Lab, Sacramento, CA
Streams: 1:24,000 USFS Resource Planning Lab, Sacramento, CA
Roads: 1:24,000 USFS Resource Planning Lab, Sacramento, CA
Contour Lines: 1:24,000 USGS Digital Elevation Data

- Proposed Wilderness
- Existing Wilderness
- US Forest Service
- Non-Federal Forest
- B.M. Benchmark
- Roads
- Trails
- ~ Perennial Stream
- ~ Intermittent Stream
- ~ USGS 24-Quadrangle Boundaries

- 300' Setback From Edge of Highway or Freeway
- 100' Setback From Edge of Road
- 30' Setback From Edge of Road
- 300' Beyond High Water Mark of River
- 100' Beyond High Water Mark of Perennial Stream
- 30' Beyond High Water Mark of Intermittent Stream
- Center Line of River or Stream
- 300' Setback From Edge of Developed Campground
- 300' Setback From Edge of Major Utility Corridor
- 100' Setback From Edge of Minor Utility Corridor

The edge of a road is defined as the quartered portion of the roadbed including all associated ditches, paths, levees, cutbanks and dikes.

The intent is to include the entire stream or riparian wilderness with the exception of boundaries designated by C, 100-foot and river setbacks are superseded by 100-foot setbacks.

USGS 24-Quadrangles, With Portion from Chews Ridge

0 0.25 Miles
Scale 1:24,000

