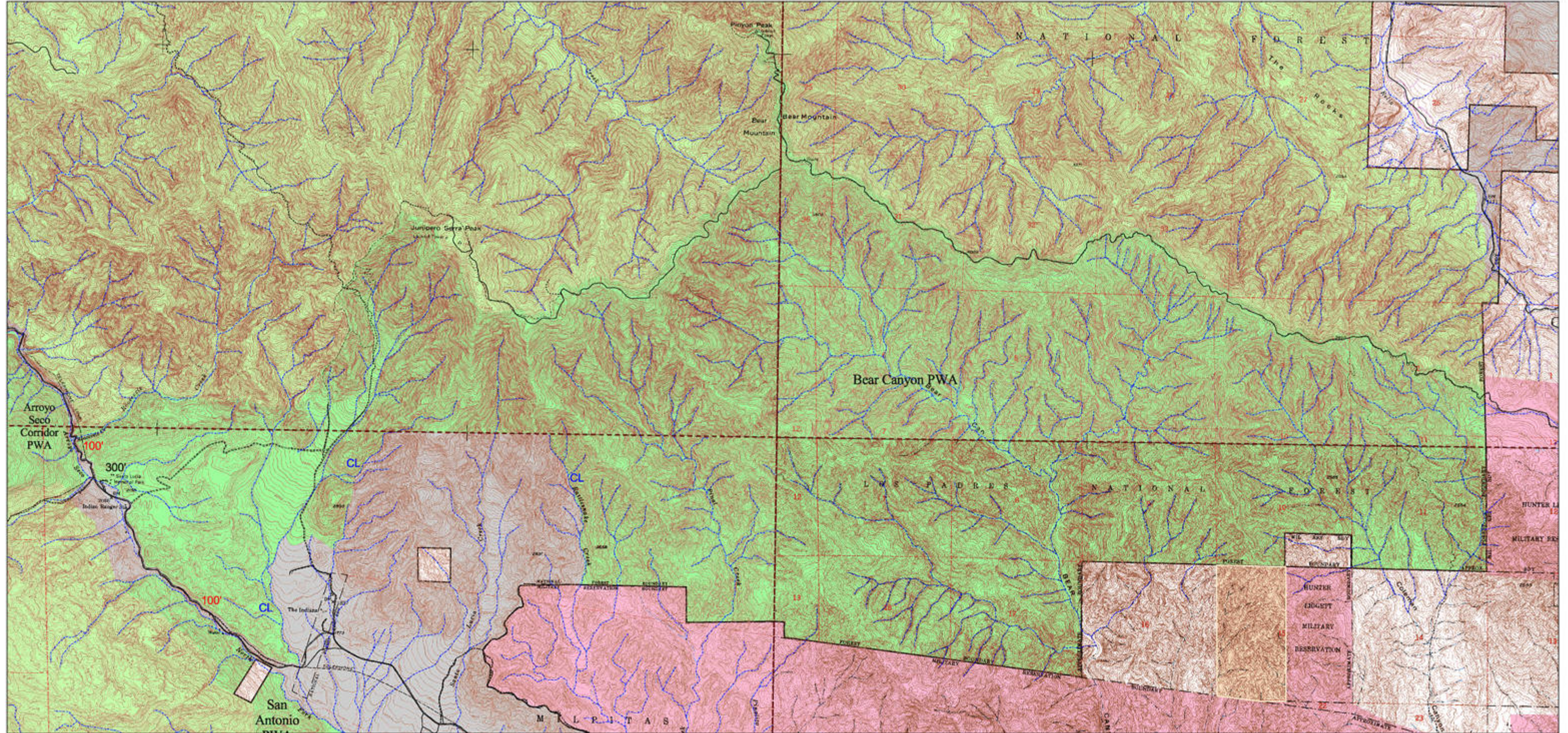


Bear Canyon

Proposed Wilderness Addition to the Ventana Wilderness

Los Padres National Forest
Bureau of Land Management, Hollister Field Office
Monterey County, California



Cartography:
Cory Gallipeau, Conception Coast Project
3887 State St, Santa Barbara, CA 93105, 805 687-2073
ccp@conceptioncoast.org, www.conceptioncoast.org
March 22, 2002
Projection Albers CA, NAD 27

Sources:
Potential Wilderness: 1:24,000 Conception Coast Project & California Wild Heritage Campaign
Existing Wilderness: 1:24,000 USFS Remote Sensing Lab, Sacramento, CA
Ownership: 1:24,000 USFS Remote Sensing Lab, Sacramento, CA
Ownership Outside USFS Boundaries: 1:100,000 California GAP Analysis Program Managed Areas
Streams: 1:24,000 USFS Remote Sensing Lab, Sacramento, CA
Roads: 1:24,000 USFS Remote Sensing Lab, Sacramento, CA
Contour Lines: 1:24,000 USGS Digital Raster Graphics

- Proposed Wilderness
- Existing Wilderness
- US Forest Service
- US Department of Defense
- Non-National Forest
- BLM
- Roads
- Trails
- Perennial Stream
- Intermittent Stream
- USGS 24k Quadrangle Boundaries

- 300' Setback From Edge of Highway or Freeway
- 100' Setback From Edge of Road
- 30' Setback From Edge of Road
- 300' Beyond High Water Mark of River
- 100' Beyond High Water Mark of Perennial Stream
- 30' Beyond High Water Mark of Intermittent Stream
- CL Center Line of River or Stream
- 300' Setback From Edge of Developed Campground
- 300' Setback From Edge of Major Utility Corridor
- 100' Setback From Edge of Minor Utility Corridor

The edge of a road is defined as the outermost portion of the roadbed including all associated cutbanks, pullouts, scenic overlooks and ditches.

The intent is to include the entire stream or river within wilderness with the exception of boundaries designated by CL. Stream and river setbacks are superseded by road setbacks.

USGS 24k Quadrangles, With Portions Shown:
Bear Canyon
Cone Peak
Junipero Serra Peak
Reliz Canyon

0 0.5 Miles
Scale 1:24,000

