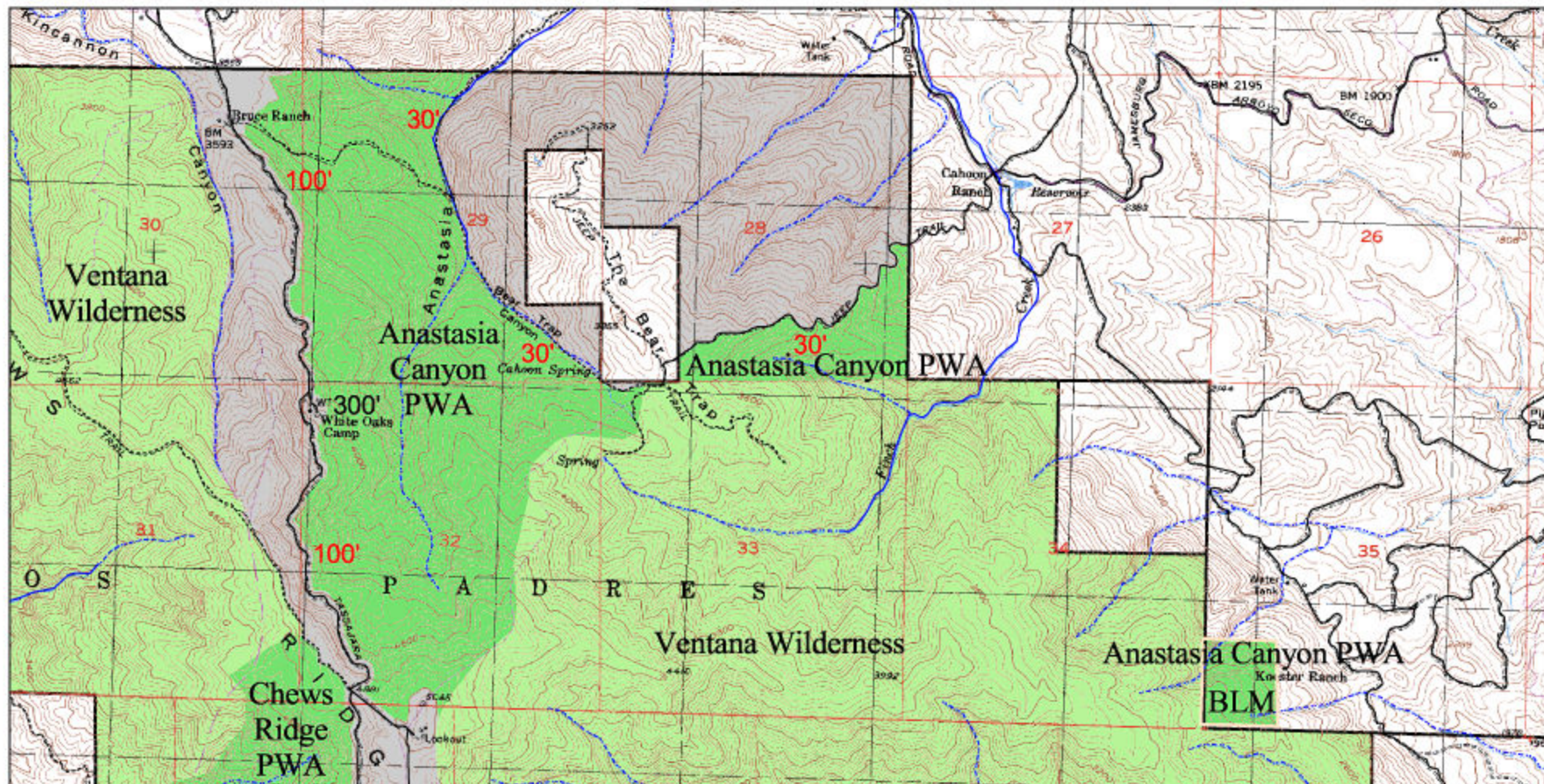


# Anastasia Canyon Proposed Wilderness Additions to the Ventana Wilderness

Los Padres National Forest  
Bureau of Land Management, Hollister Field Office  
Monterey County, California



**Cartography:**  
Cory Galpeau, Conception Coast Project  
3887 State St, Santa Barbara, CA 93105, 805 687-2073  
cgp@conceptioncoast.org, www.conceptioncoast.org  
March 22, 2002  
Projection: Albers CA, NAD 27

**Sources:**  
Potential Wilderness: 1:24,000 Conception Coast Project & California Wild Heritage Campaign  
Existing Wilderness: 1:24,000 USFS Remote Sensing Lab, Sacramento, CA  
Ownership: 1:24,000 USFS Remote Sensing Lab, Sacramento, CA  
Ownership Outside USFS Boundaries: 1:100,000 California GAP Analysis Program Managed Areas  
Streams: 1:24,000 USFS Remote Sensing Lab, Sacramento, CA  
Roads: 1:24,000 USFS Remote Sensing Lab, Sacramento, CA  
Contour Lines: 1:24,000 USGS Digital Raster Graphics

- Proposed Wilderness
- Existing Wilderness
- US Forest Service
- Non-National Forest
- BLM
- Roads
- Trails
- Perennial Stream
- Intermittent Stream
- USGS 24K Quadrangle Boundaries

- 300' Setback From Edge of Highway or Freeway
- 100' Setback From Edge of Road
- 30' Setback From Edge of Road
- 300' Beyond High Water Mark of River
- 100' Beyond High Water Mark of Perennial Stream
- 30' Beyond High Water Mark of Intermittent Stream
- CL Center Line of River or Stream
- 300' Setback From Edge of Developed Campground
- 300' Setback From Edge of Major Utility Corridor
- 100' Setback From Edge of Minor Utility Corridor

The edge of a road is defined as the outermost portion of the roadbed including all associated cutbanks, pullouts, scenic overlooks and ditches.

The intent is to include the entire stream or river within wilderness with the exception of boundaries designated by CL. Stream and river setbacks are superseded by road setbacks.

USGS 24K Quadrangles, With Portions Shown:  
Chews Ridge

0 0.25 Miles  
Scale 1:24,000

